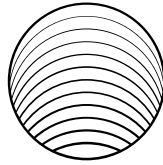


OUT AUDIO

Speaker stand - MODEL 10 x 10 & 20 x 20





OUT AUDIO

STANDARD SIZE

Speaker stand - MODEL 10 x 10

ST01

top size W 19 x D 16 cm

overall dimensions W 30 x D 26,5 x H 68cm (without spikes)

Speaker stand - MODEL 10 x 10

ST02

top size W 18,5 x D 16 cm

overall dimensions W 30 x D 26,5 x H 68 cm (without spikes)

Speaker stand - MODEL 20 x 20

ST03

top size W 25,5 x D 24,2 cm

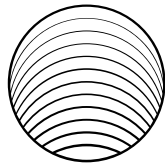
overall dimensions W 38 x D 34 x H 56 cm (without spikes)

Speaker stand - MODEL 20 x 20

ST04

top size W 28 x D 27,4 cm

overall dimensions W 41 x D 37,5 x H 56 cm (without spikes)



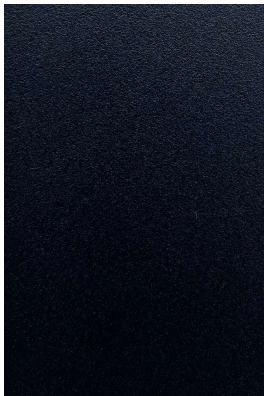
OUT AUDIO

customize

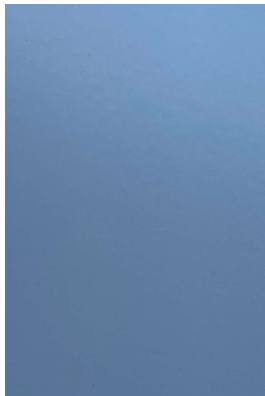
As manufacturers, we can change the shape, size and colour of our products.
Tell us please, what do you need?

finish options

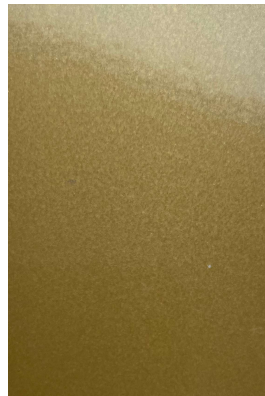
Colours shades may vary slightly due to individual screen display settings on monitors/mobile devices. The grain of veneers and solid wood is always different, which confirms its uniqueness and naturalness.



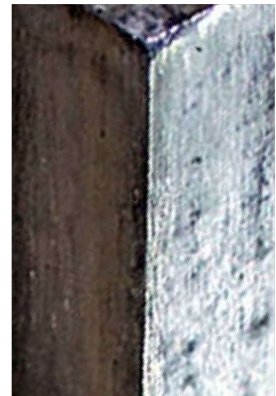
09 Jet Black



10 Light Grey



11 Gold



12 Clear